

IERS/GGFC 2012 CALL Operational Data Products, and Science Support Data Products

The deadline for proposals is 1-April, 2012. Please send proposals to the GGFC Chair, T. van Dam, at tonie.vandam@uni.lu.

The structure of Global Geophysical Fluid Center (GGFC) within the International Earth Rotation and Reference Systems Service was renovated in 2009. The structural changes were instituted to 1) allow for the establishment of operational products, i.e. those products, which are provided with regularity and which have been evaluated as being reliable and precise; and to 2) allow for the inclusion of new operational products.

The GGFC is currently composed of 2 components. The Operational Component hosts products that can be provided regularly, with acceptable latency, and with sufficient precision. These Operational Products are defined as products provided with temporal regularity (daily, weekly, etc.) and which have been positively evaluated in terms of precision and reliability.

The Science Support Component hosts products such as Earth models, atmospheric and oceanic tidal models, ice mass change models, etc, that is products that do not change with any regularity, but are nonetheless required by the IERS user community.

Figure 1 describes the current structure of the GGFC:

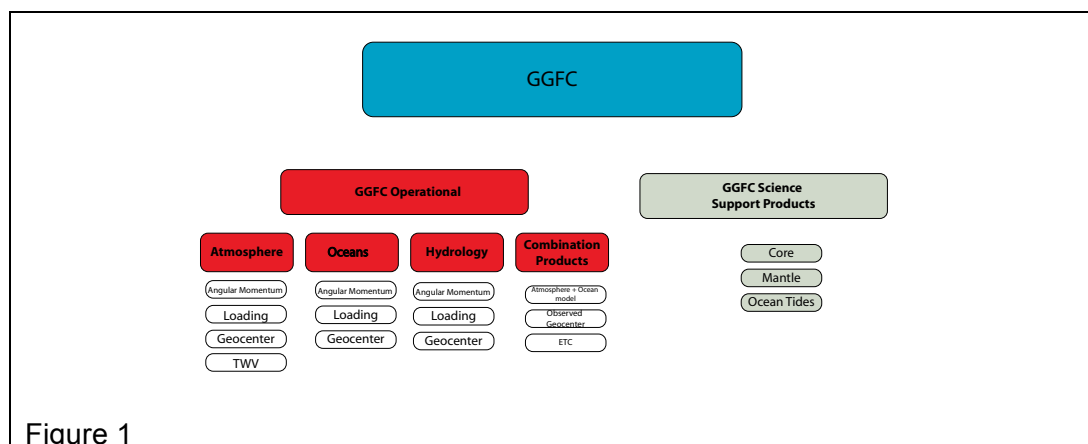


Figure 1

The GGFC is soliciting proposals for:

- New operational products (New products can duplicate existing products)
- Chair of the GGFC Science Support Component
- Research support products (Earth Models, Ice history models, tidal models, etc.)

Proposals should include a description of the product, information on the availability of data for generating the product, the expected reliability of the product, the expected delay in making the product available operationally. The GGFC chair and the Chair of the appropriate Special Bureau will review proposals. The IERS Directing Board will provide final approval of the proposals. At this point in the process, the product is adopted as a provisional operational product for a period of two years.

At the end of this two-year period, the performance of the institution providing the product is evaluated. The evaluation is based on the reliability, i.e. a determination of the product's

precision, its latency, its usage, etc. If the review is negative, justifications can be provided and a second trial period of 1 year can be granted. If the review is positive, the product becomes an official IERS operational product and the institution becomes an official IERS Associate Product Center within the GGFC.

An institute or individual can propose to be responsible for a number of different products. In most cases, each individual product will require a new proposal. In some cases, if the products are closely linked, for example viscosity models and ice mass histories, a single proposal will be accepted.